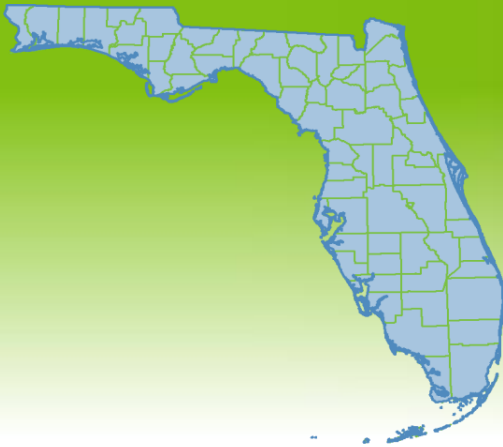


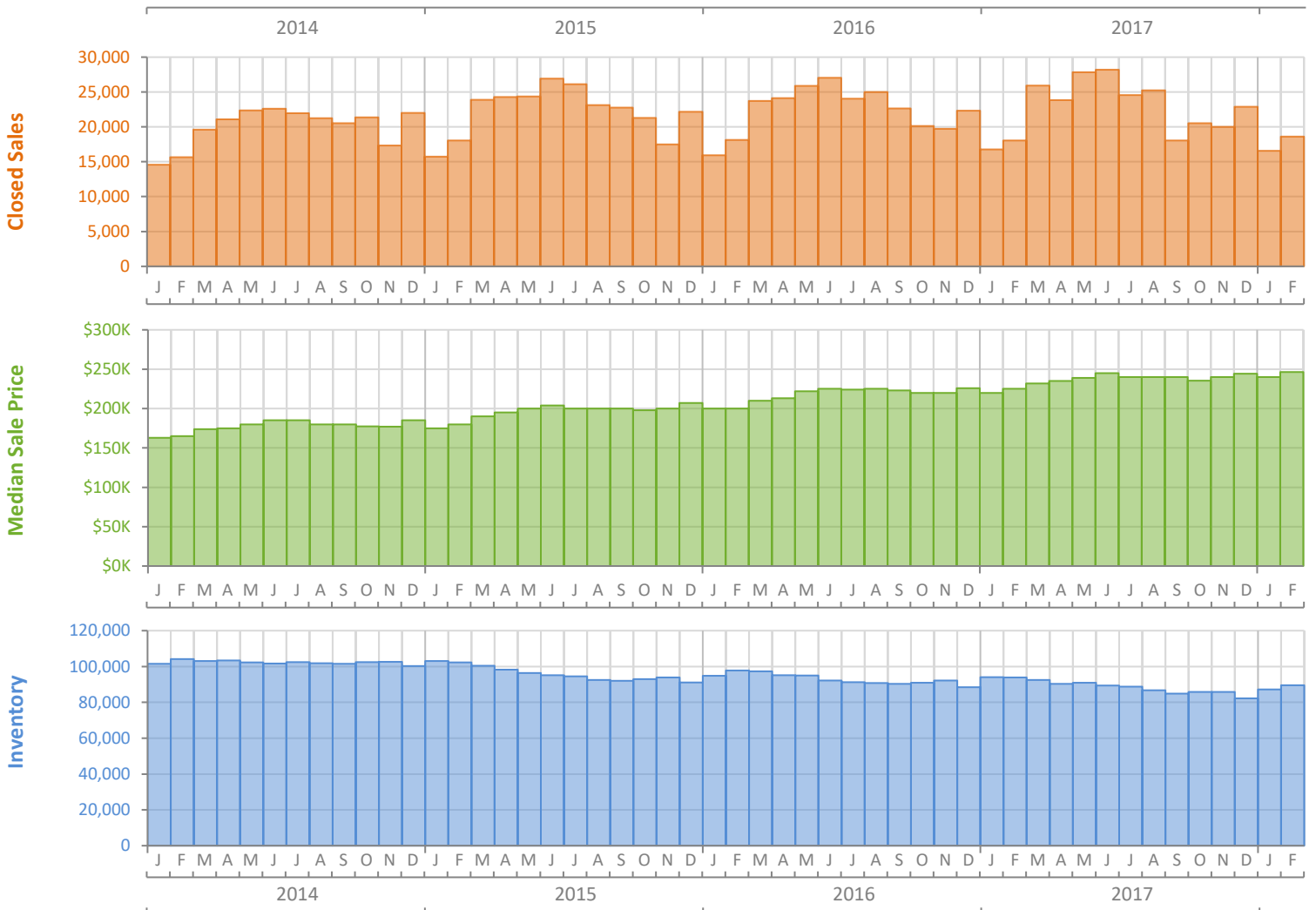
Monthly Market Summary - February 2018

Single Family Homes

Florida



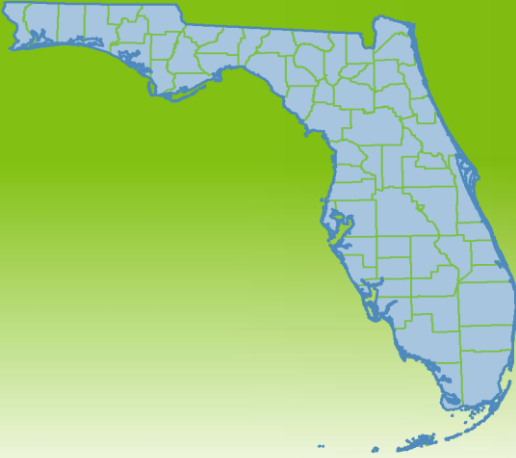
| | February 2018 | February 2017 | Percent Change Year-over-Year |
|--|---------------|---------------|-------------------------------|
| Closed Sales | 18,620 | 18,033 | 3.3% |
| Paid in Cash | 5,588 | 5,859 | -4.6% |
| Median Sale Price | \$246,500 | \$225,000 | 9.6% |
| Average Sale Price | \$336,601 | \$313,401 | 7.4% |
| Dollar Volume | \$6.3 Billion | \$5.7 Billion | 10.9% |
| Med. Pct. of Orig. List Price Received | 96.3% | 95.8% | 0.5% |
| Median Time to Contract | 48 Days | 54 Days | -11.1% |
| Median Time to Sale | 90 Days | 98 Days | -8.2% |
| New Pending Sales | 26,045 | 26,310 | -1.0% |
| New Listings | 31,475 | 29,699 | 6.0% |
| Pending Inventory | 39,974 | 41,674 | -4.1% |
| Inventory (Active Listings) | 89,504 | 93,818 | -4.6% |
| Months Supply of Inventory | 3.9 | 4.2 | -7.1% |



Monthly Distressed Market - February 2018

Single Family Homes

Florida



| | | February 2018 | February 2017 | Percent Change Year-over-Year |
|-----------------|-------------------|---------------|---------------|-------------------------------|
| Traditional | Closed Sales | 17,785 | 16,379 | 8.6% |
| | Median Sale Price | \$250,000 | \$230,000 | 8.7% |
| Foreclosure/REO | Closed Sales | 628 | 1,289 | -51.3% |
| | Median Sale Price | \$170,000 | \$150,000 | 13.3% |
| Short Sale | Closed Sales | 207 | 365 | -43.3% |
| | Median Sale Price | \$185,125 | \$166,625 | 11.1% |

