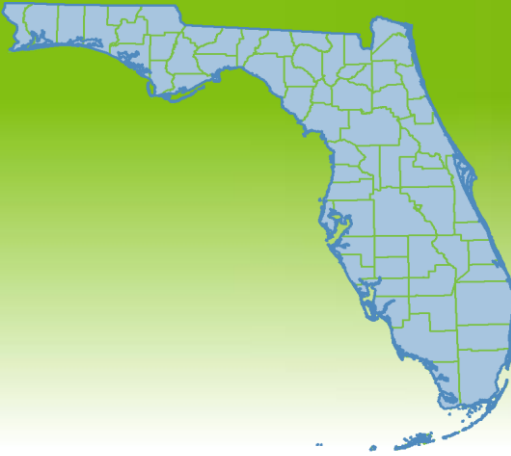


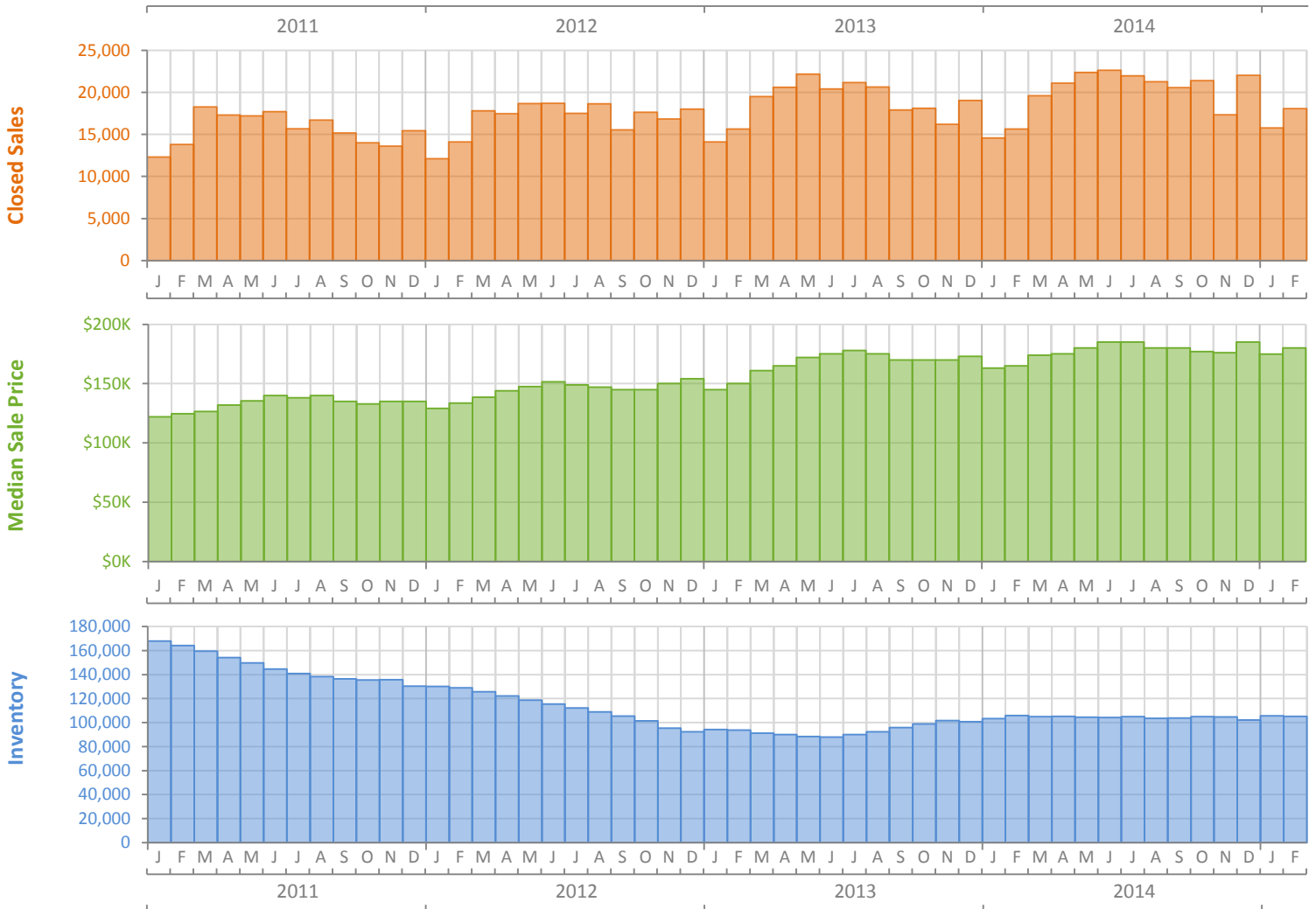
Monthly Market Summary - February 2015

Single Family Homes

Florida



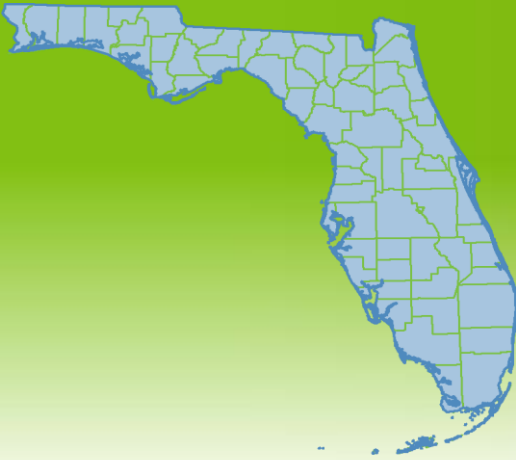
	February 2015	February 2014	Percent Change Year-over-Year
Closed Sales	18,078	15,657	15.5%
Paid in Cash	7,652	7,492	2.1%
Median Sale Price	\$179,999	\$165,000	9.1%
Average Sale Price	\$261,578	\$260,275	0.5%
Dollar Volume	\$4.7 Billion	\$4.1 Billion	16.2%
Med. Pct. of Orig. List Price Received	94.3%	94.0%	0.3%
Median Time to Contract	67 Days	68 Days	-1.5%
Median Time to Sale	109 Days	113 Days	-3.5%
New Pending Sales	25,370	22,718	11.7%
New Listings	28,163	26,898	4.7%
Pending Inventory	43,471	44,316	-1.9%
Inventory (Active Listings)	105,117	105,884	-0.7%
Months Supply of Inventory	5.2	5.6	-7.1%



Monthly Distressed Market - February 2015

Single Family Homes

Florida



		February 2015	February 2014	Percent Change Year-over-Year
Traditional	Closed Sales	12,825	10,632	20.6%
	Median Sale Price	\$210,000	\$199,000	5.5%
Foreclosure/REO	Closed Sales	4,349	3,705	17.4%
	Median Sale Price	\$118,000	\$99,560	18.5%
Short Sale	Closed Sales	904	1,320	-31.5%
	Median Sale Price	\$145,000	\$135,000	7.4%

